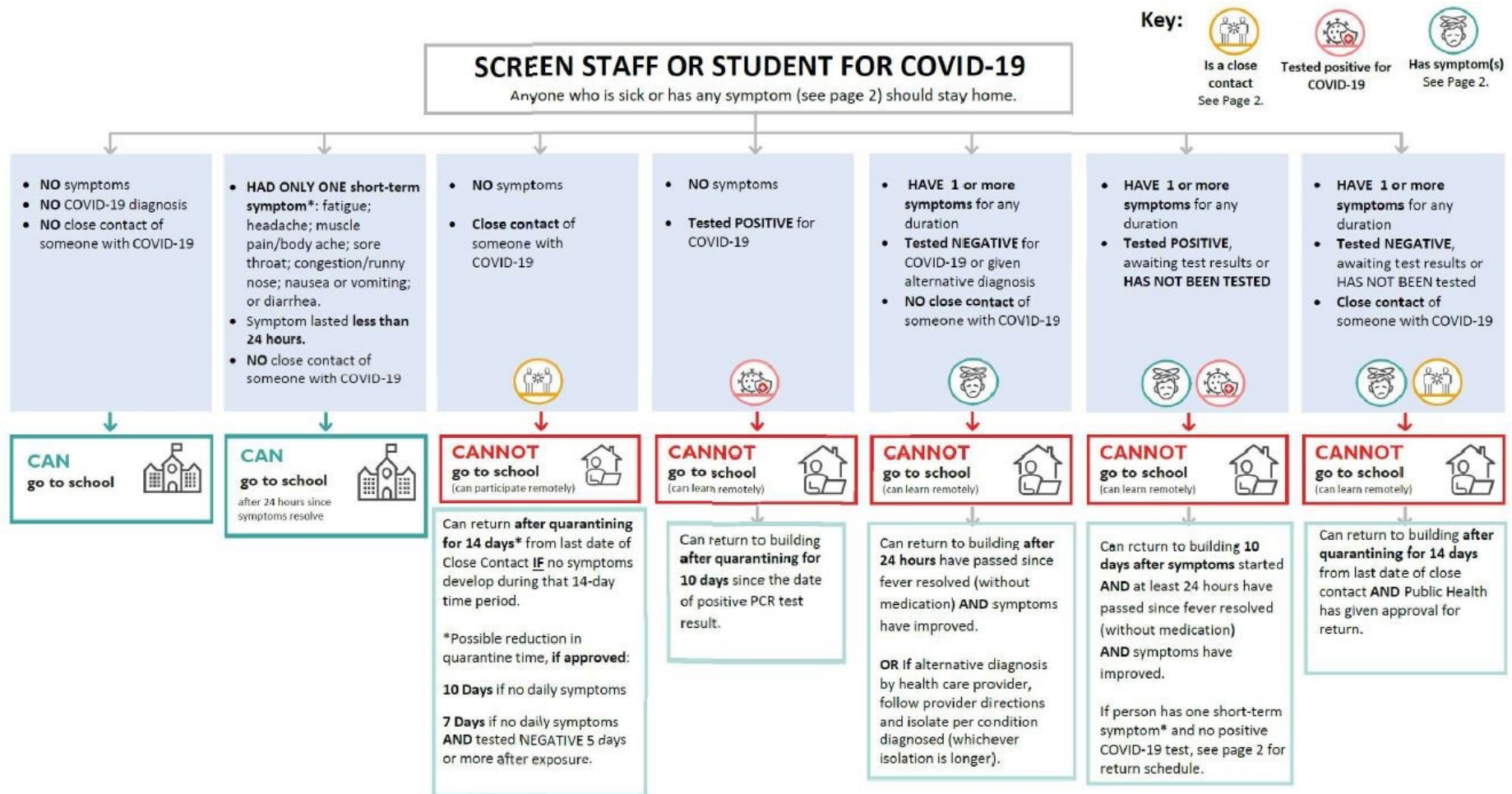




I Know I am Loved at . . .

ITBP COVID-19 Symptom Flow Chart





COVID-19 SYMPTOMS**

- Fever (100.4°F / 38°C or higher)
- Headache
- Cough
- Muscle pain or body aches
- Loss of taste or smell
- Sore throat
- Chills
- Congestion or runny nose
- Shortness of breath or Difficulty breathing
- Nausea or vomiting
- Fatigue
- Diarrhea

*A **short-term symptom** is defined as: A person has **only one of the following symptoms** (fatigue; headache; muscle pain or body aches; sore throat; congestion or runny nose; nausea or vomiting; or diarrhea) **AND** the symptom begins and resolves in less than 24 hours **AND** no known COVID-19 exposure (close contact).

A person can return to school the next day once 24 have passed since symptom resolved. A COVID-19 test is not required.

***That are not explained by a preexisting condition, such as asthma.*



CLOSE CONTACT DEFINITION

“Close Contact” includes anyone in one or more of the following categories:

- Been within 6 feet (2 meters) of a person with COVID-19 for a combined total of 15 minutes or more within a 24-hour period; **OR**
- Live in the same household as a person with COVID-19; **OR**
- Cared for a person with COVID-19; **OR**
- Been in direct contact with saliva or other body secretions from a person with COVID-19 (for example: been coughed on, kissed, shared utensils, etc.)

Public Health will help identify close contacts.